



Washington
Gas™
A WGL Company



pepco

AECOM



Anacostia River Sediment Project

Presented by:

Catherine Trent, Washington Gas

Ghirmay Berhe, Pepco

Ravi Damera, AECOM

Outline

- Anacostia River Watershed
- Anacostia History
- Possibilities for the Anacostia Waterfront
- Anacostia River Sediment Project
- Consultative Working Group
- Washington Gas East Station
- PEPCO Benning Road Facility

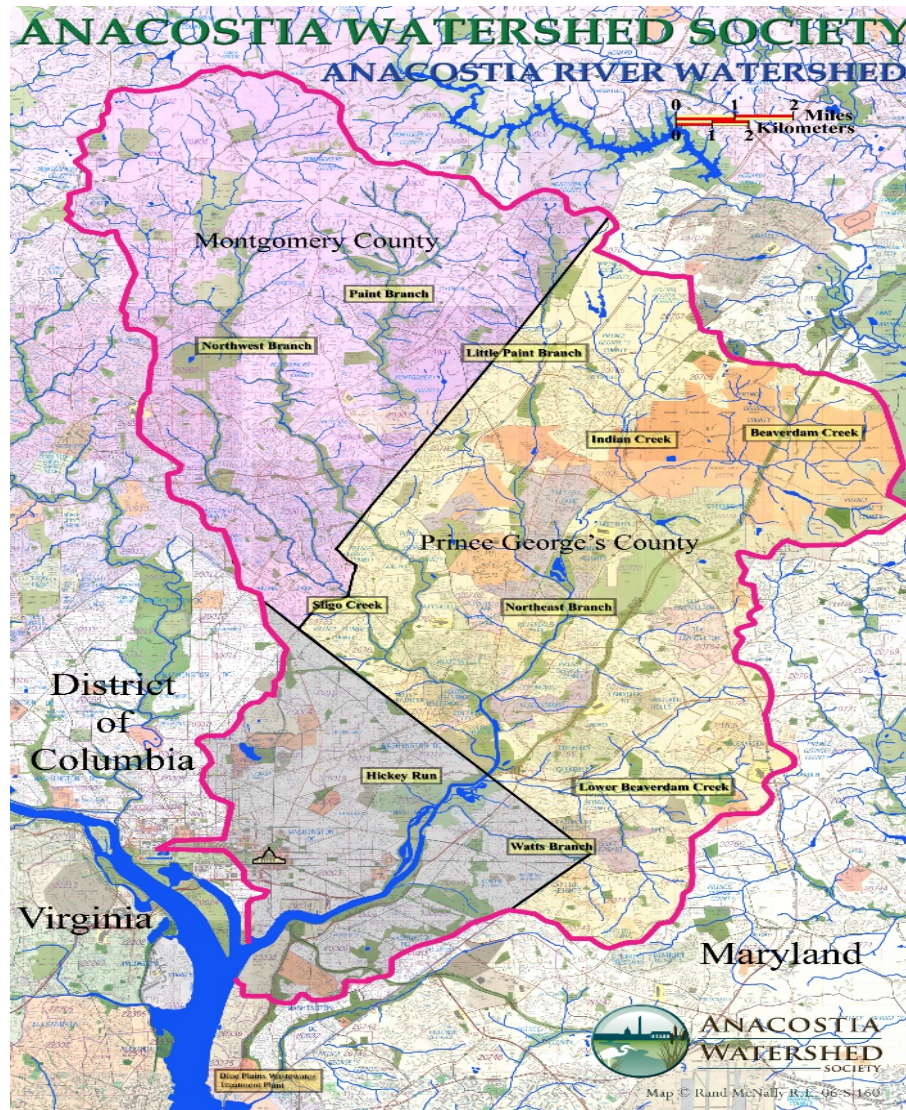


Anacostia River Watershed

Anacostia River Watershed

- Covers portions of District of Columbia, Prince George's and Montgomery County in Maryland
- Approximately 176 square miles (456 sq. km.) in area
- Roughly 25% of its land area lies in the District
- The Anacostia River is over 8.5 miles long
- The Anacostia River is entirely tidal in the District while the upstream area in Maryland is primarily non-tidal

Anacostia River Watershed



Reference: <http://www.anacostiaws.org/explore/maps>



Reference: <http://www.chesapeakequarterly.net/v02n2/main/>



Anacostia History

Human Impacts to the Anacostia

Humans activities have been impacting the Anacostia River for a long time:

- Colonial Deforestation
- Agricultural/Livestock Farming as early as 1600's
- Urban Development beginning as early as the 1800's
- Dredging/Filling
- Commercial Use
- Industrial Use



**Cows Cattle Scene In Marsh On The Anacostia River
Washington D C**

Photo by John K Hillers

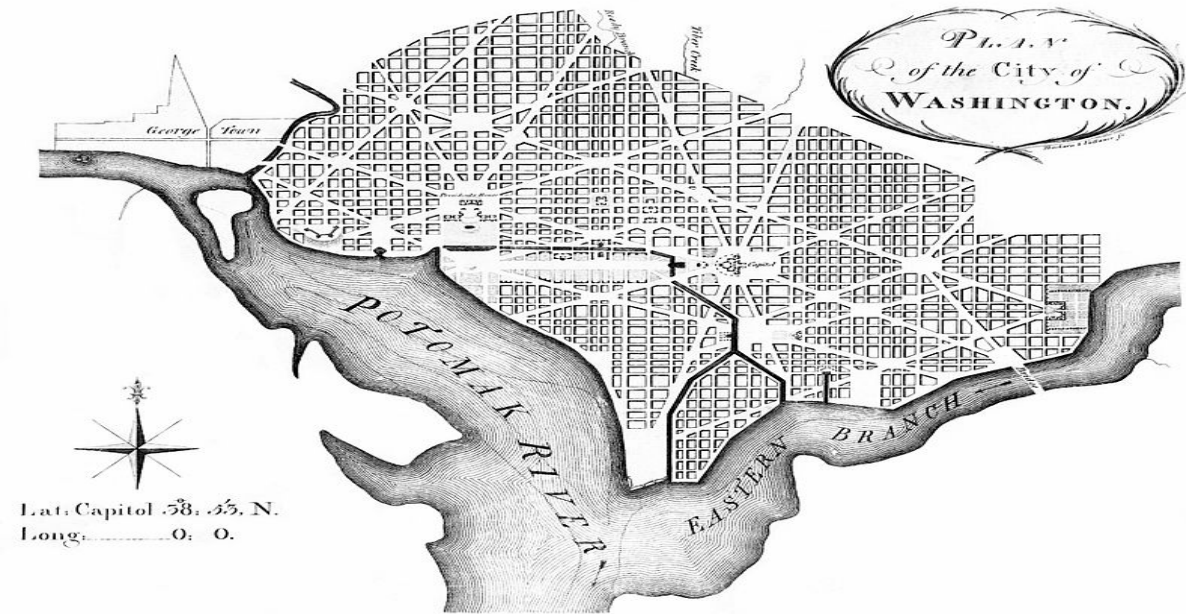
Anacostia River Quick Facts

- The lower Anacostia basin was the home of a group of native Americans known today as “Nacotchtanks”
- With the European arrival, the river became known as the “Eastern Branch of the Potomac”
- In 1790, Congress instructed President Washington to find a location on the Potomac for a new capital and the Anacostia played a role in the selection of the site for the new District of Columbia
- Eroded sediment from upstream cultivation was changing the nature of both the Potomac and the Anacostia Rivers through the filling in of the channel and tidal wetlands
- During and after the Civil War, as the population grew, gutters and then enclosed sewers were built to move waste and street runoff directly to the streams and rivers

Quick Facts - Continued

- In 1892, the Corps of Engineers' used \$20,000 of Potomac funds to begin dredging and filling operations
- In 1898, Lt. Col. Charles Allen suggested that the Anacostia's filled-in mudflats could be a public park
- In 1918, Congress officially designated the new land on the eastern side of the river as the Anacostia Park
- The Corps of Engineers dredging, walling and filling project continued until it was suspended by war in 1942
- In 1968, the NPS proposed a park management plan that was not implemented thus Kingman Lake remained sludge and weeds and East Lake became part of the District's landfill and disappeared

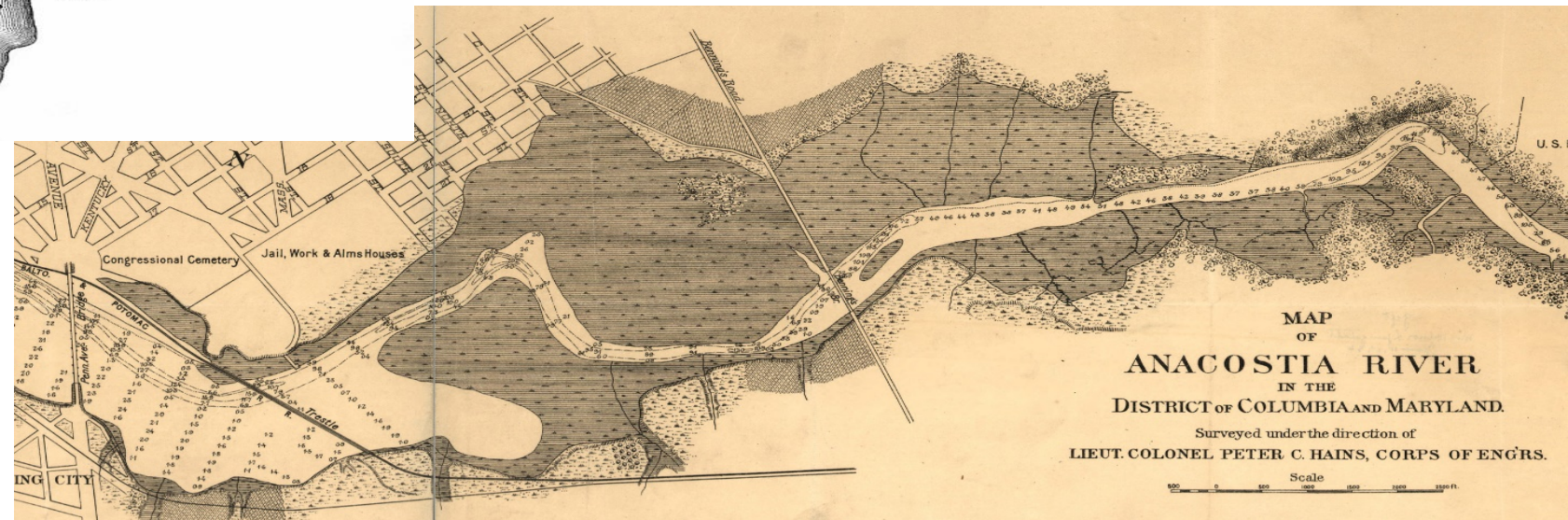
Anacostia River Historic Maps



1791 L'Enfant Plan
(completed by Ellicott – 1792)

Refers to the Anacostia as the “Eastern Branch”
of the Potomac

1891 Army Corps of Engineers
map of the Anacostia River
and its tidal marshes





Possibilities for the Anacostia Waterfront

Possibilities for Anacostia Waterfront

In 2000, a project steering committee comprised of the DC Office of Planning, NPS and the General Services Administration was created and produced a document providing a comprehensive look at the possibilities for the Anacostia waterfront area, with five principal themes:

- A Clean and Active River (Environment)
- Breaking Down Barriers and Gaining Access (Transportation)
- A Great Riverfront Park System (Public Realm)
- Cultural Destinations of Distinct Character (Culture and Institutions)
- Building Strong Waterfront Neighborhoods (Economic Development)



Anacostia River Sediment Project

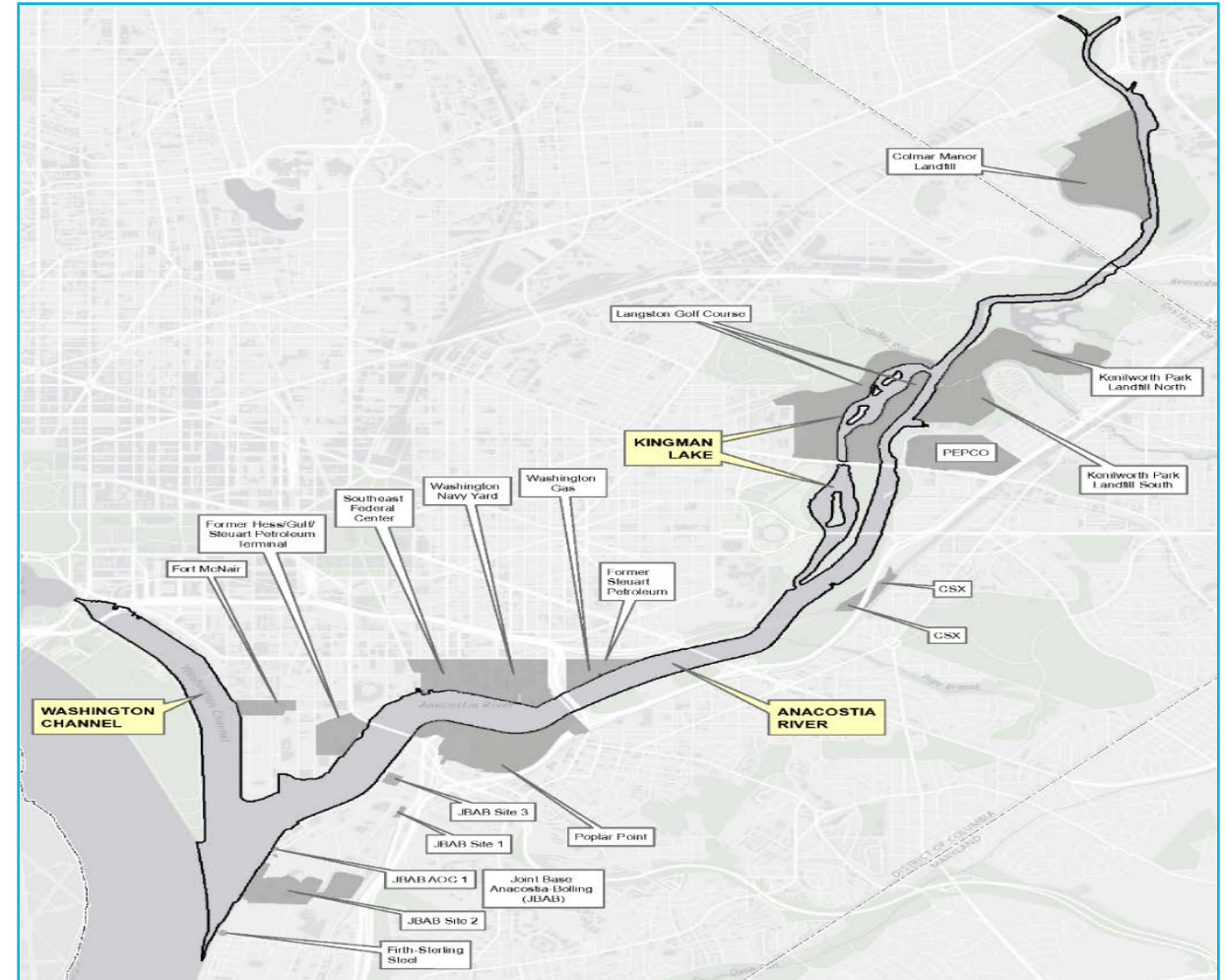
Anacostia River Sediment Project

- DOEE-NPS/DOI working jointly on sediment project
- DOEE is conducting a remedial investigation and feasibility study (RI/FS) of the Anacostia River sediments
- The purpose of the RI is to assess the nature and extent of pollution in the river by sampling river sediment and fish for a wide variety of chemicals
- As part of the RI, studies will also integrate sampling and data collection to support a study for the Natural Resources Damage Assessment (NRDA) of the river
- After additional RI work is complete, the FS will evaluate potential remedial actions



Project Study Area

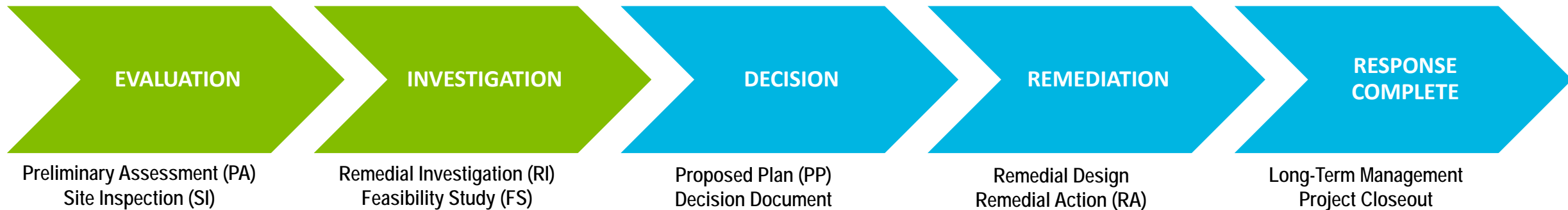
- Subareas
 - Main stem of Anacostia River (9 miles long)
 - Kingman Lake (1.8 miles long)
 - Washington Channel (2 miles long)
- 15 potential environmental cleanup sites (PECSes)



Project Schedule Circulated by DOEE in 2016

Project Phase	Task	2013	2014	2015	2016	2017	2018
Remedial Investigation	Phase 1 Planning						
	Phase 1 Remedial Investigation						
	Phase 1 RI Report						
	Phase 2 Planning						
	Phase 2 Remedial Investigation						
	Phase 2 RI Report						
Feasibility Study	RAO/PRG Document						
	Feasibility Study						
	Feasibility Study Report						
Proposed Plan/ROD	Proposed Plan Development						
	Record of Decision Development						

Reference: Leadership Council for a Cleaner Anacostia River, Anacostia River Sediment Project Update, October 6, 2016





Consultative Working Group

Consultative Working Group

- DOEE and DOI have convened a “consultative working group” among parties that they contend are potentially responsible for conditions in the river (“PRPs”)
- Some PRPs agreed to participate and some declined
- Participating Parties include [but not limited to]:
 - Pepco
 - Department of Navy
 - DC Water
 - Washington Gas
 - District of Columbia
 - Washington Suburban Sanitary Commission (WSSC)
 - Prince George’s County, MD
- Not a decision-making body; has engaged in occasional discussions of RI findings, when DOEE and NPS have opted to do so

Consultative Working Group

Three main purposes according to DOEE:

- 1) Provide a forum for sharing technical information and viewpoints**
- 2) Coordinate efforts to identify additional PRPs**
- 3) Initiate a two-phased approach for allocating costs**

- Has been meeting since September 2016
- Nine meetings have been hosted



Washington Gas East Station

Washington Gas East Station



Washington Gas East Station

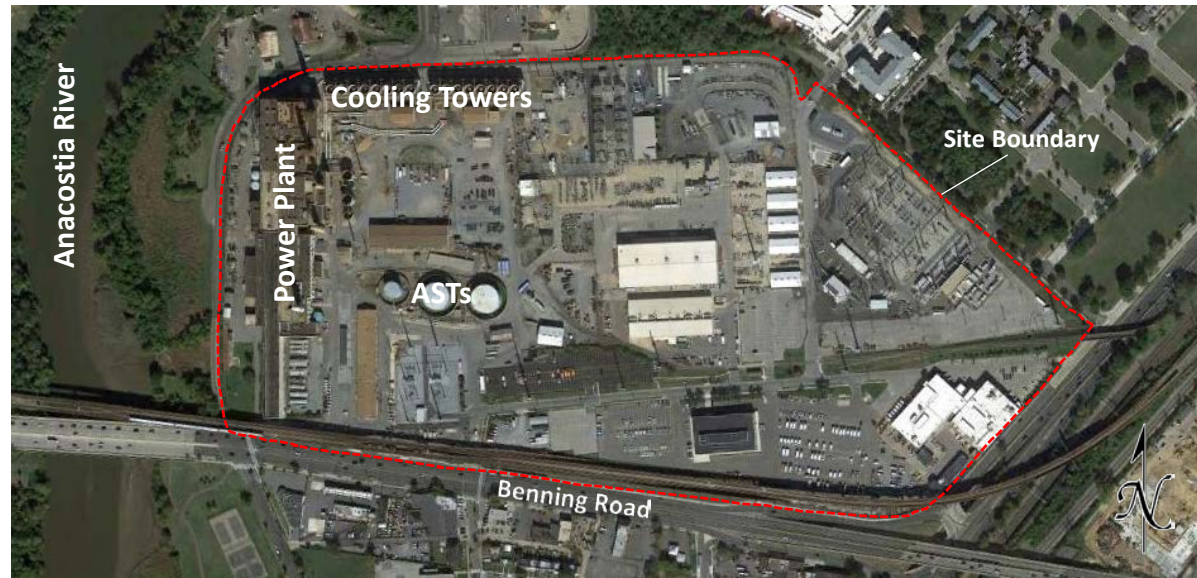




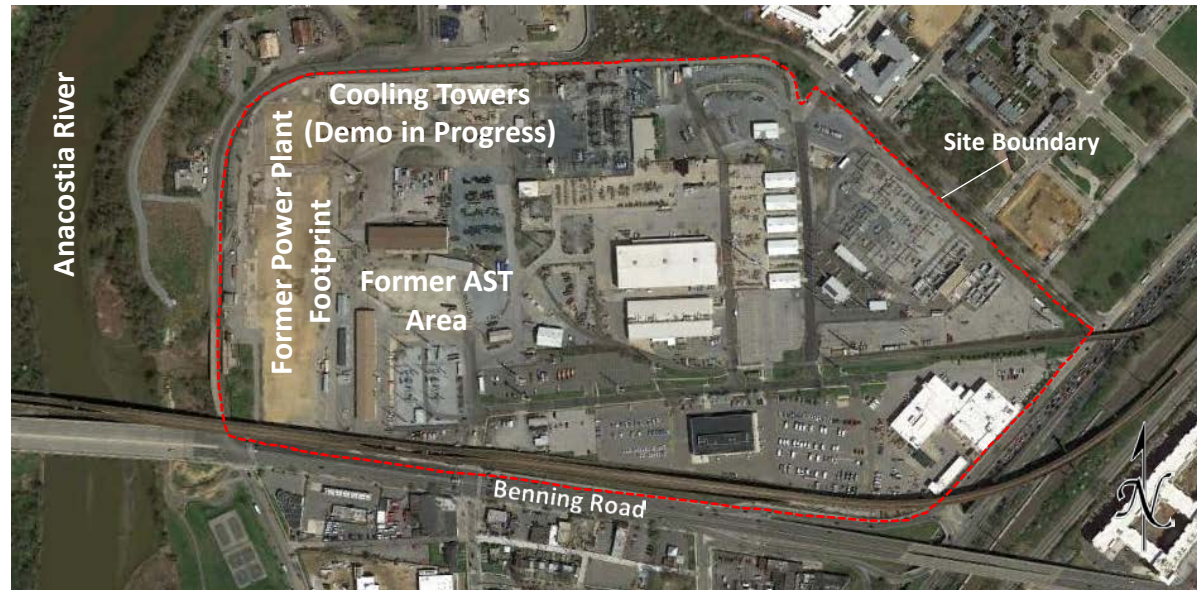
PEPCO Benning Road Facility

PEPCO Benning Road Facility

Before
Power Plant
Demolition



After
Power Plant
Demolition



PEPCO Benning Road Facility





Questions



Thank You!

Catherine Trent, Washington Gas
Ghirmay Berhe, Pepco
Ravi Damera, AECOM